

Deco 640 Drawing Tablet

Contents

1. Introduction	2
1.1 Product Overview	3
1.2 Included with your product	3
2. Connection	3
2.1 Connect to computer	3
2.2 Connect to Android Phone or Tablet	4
3. Compatibility	5
4. Product Settings	5
4.1 Driver Installation	5
4.2 Introduction to Driver	7
4.2.1 Device Settings	8
4.2.2 Pen Settings	13
4.3 Driver Settings	16
4.4 Driver Uninstallation	16
5.FAQs	17

1. Introduction

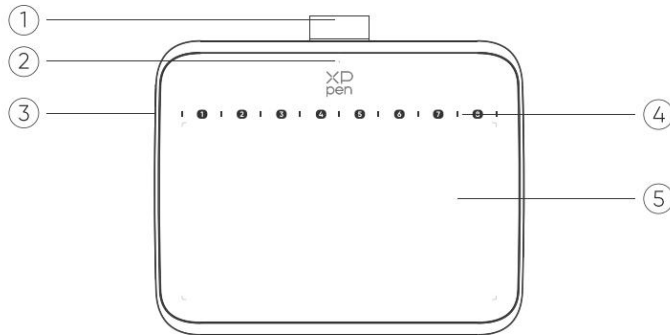


Thank you for choosing XPPen Deco 640 Drawing Tablet. This user manual is specially designed to detail the product's functions and features. Please read this manual before using the product to ensure safe and proper use.

Due to the latest product improvements, content may differ from the final product and is subject to change without prior notice.

Note: The pictures in the User Manual are for reference only. The User Manual supplied with the device may vary depending on the model.

1.1 Product Overview



1. Pen sleeve
2. Indicator light
 - a. Flashing: the stylus is in range, but not touching the active area.
 - b. Always On: the stylus is in contact with the active area.
 - c. Off: the stylus is beyond the active area.
3. USB-C port
4. Soft shortcut keys: Use the pen tip to click to call the command
5. Active area

1.2 Included with your product

Drawing Tablet x1

Stylus x1

Pen Nibs x10

USB-C to USB-A Cable x1

Nib Extractor x1

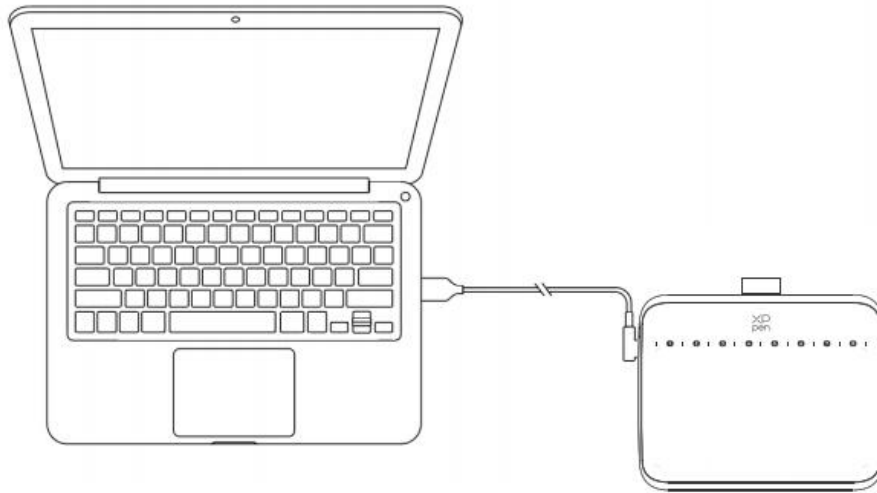
USB to USB-C Adapter x1 *

*Due to different product specifications, the adapter may not be standard. Please refer to the actual product received.

2. Connection

2.1 Connect to computer

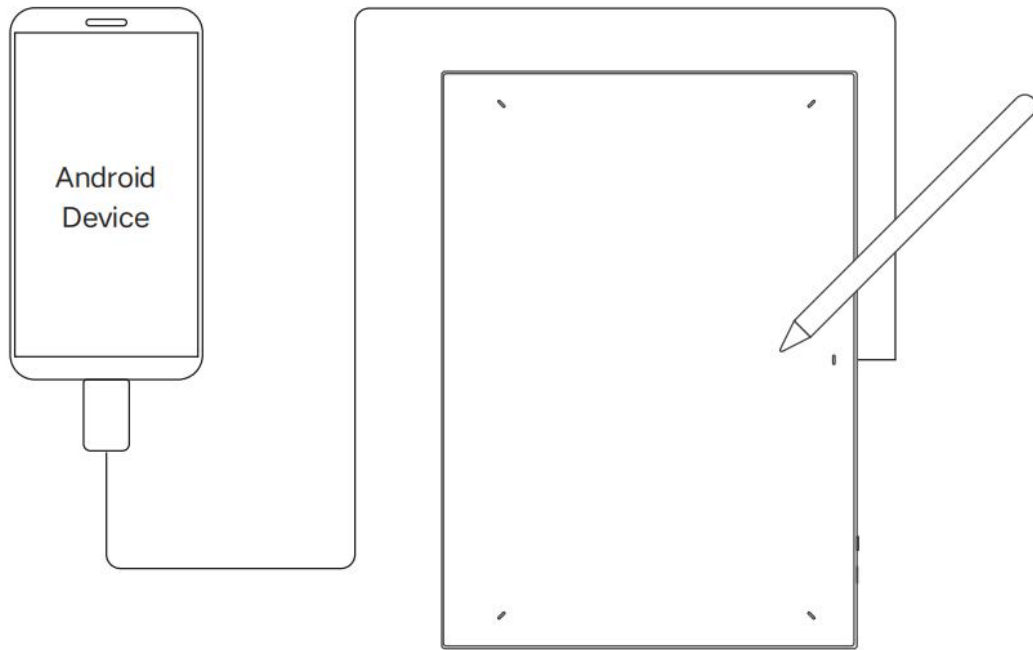
Please connect the USB-C to USB-A cable to the USB port on the computer and the USB-C port on the tablet respectively.



2.2 Connect to Android Phone or Tablet

1. Please connect the USB-C cable with OTG Adapter to the Android device and the drawing tablet respectively.
2. Please place the XPPen drawing tablet and the Android device upright, and open an Android App with support for pressure sensing.
3. Please disable the auto-rotate function in the Android device, and keep the screen in portrait mode.

* Currently, the drawing tablet can only be used normally when the Android device is in portrait mode. It will not be used normally when in landscape mode.



3. Compatibility

Windows 7 (or later)
macOS 10.12 (or later)
Android 10.0 (or later)
Chrome OS 88 (or later)
Harmony OS
Linux.

4. Product Settings

4.1 Driver Installation

To ensure the device works properly, please install the driver before using.

Please download the driver suitable for your product model from XPPen website (<https://www.xp-pen.com>).

Notes:

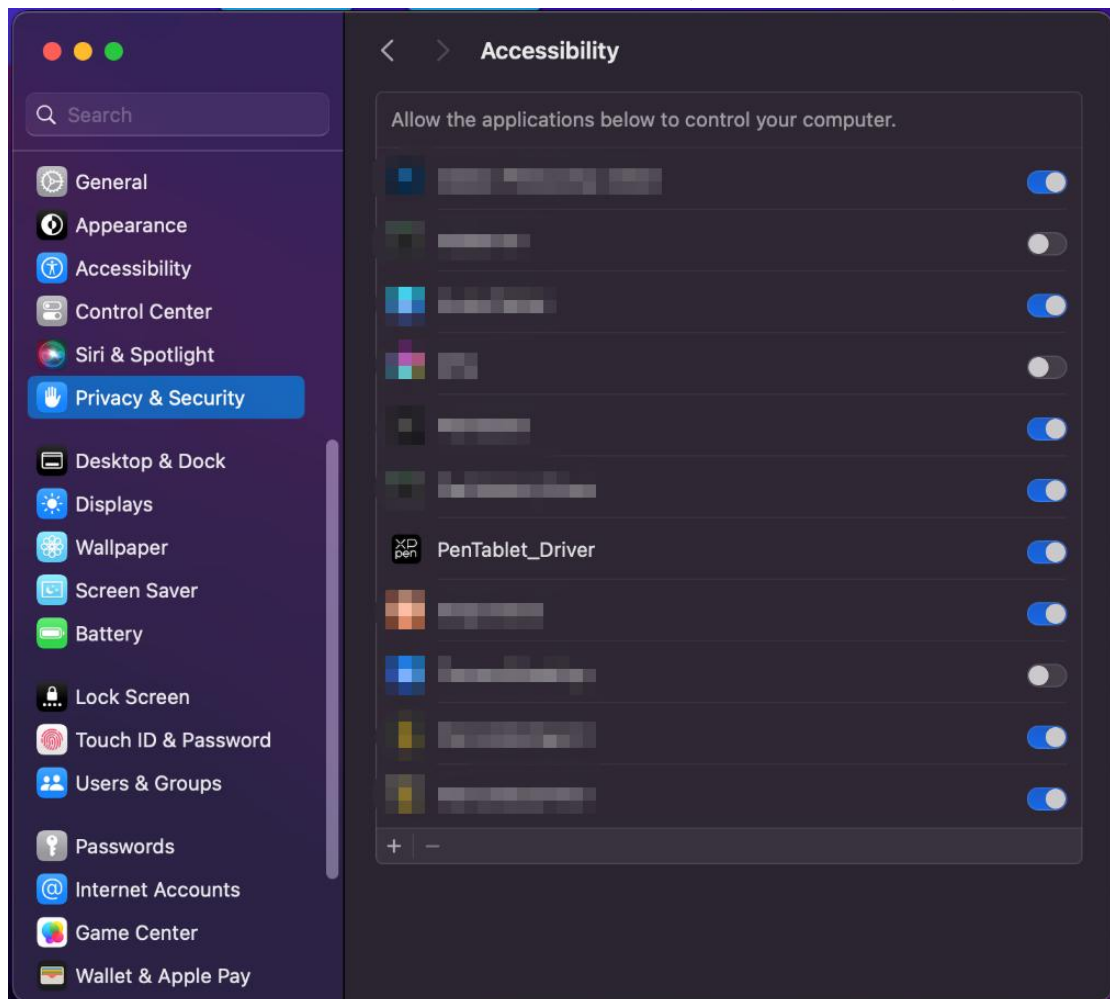
1. Before installing the driver, please turn off all antivirus software and graphics software.
2. Uninstall drivers (if any) for other drawing displays/tablets before the installation.
3. Restart your computer after the installation is completed.
4. For the best performance for your device, we recommend you to install the latest driver.

Windows:

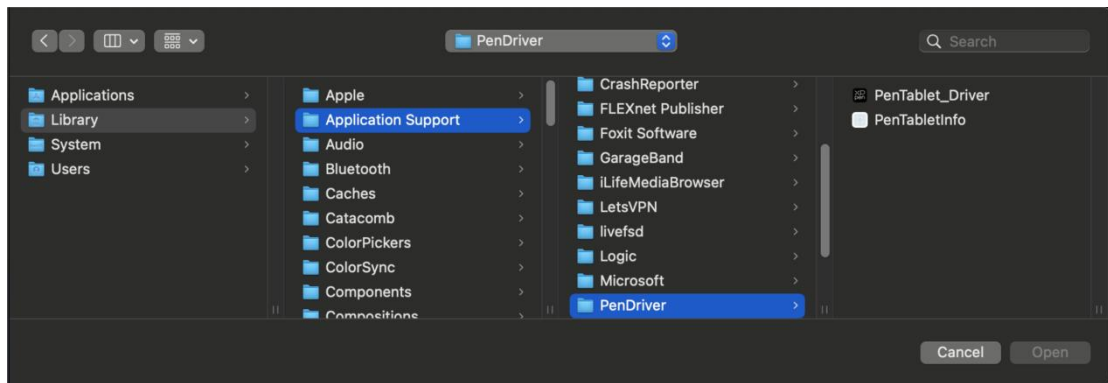
Unzip file. Run the "exe" file as administrator, and follow the prompts to complete the installation.

Mac:

Unzip file, run the "dmg" file and follow the prompts to complete the installation. Go to System Settings -> Privacy & Security -> Accessibilities; Wireless: System Settings -> Privacy & Security -> Accessibilities & Bluetooth, please ensure that the PenTabletDriver option is checked; Otherwise, the device and driver may not function properly.



If there is no PenTablet_Driver on the list, go to resource Library -> Application Support -> PenDriver to add the driver manually.



Linux:

Deb: Enter command “sudo dpkg -i”. Drag the installation file to the window and execute the command;

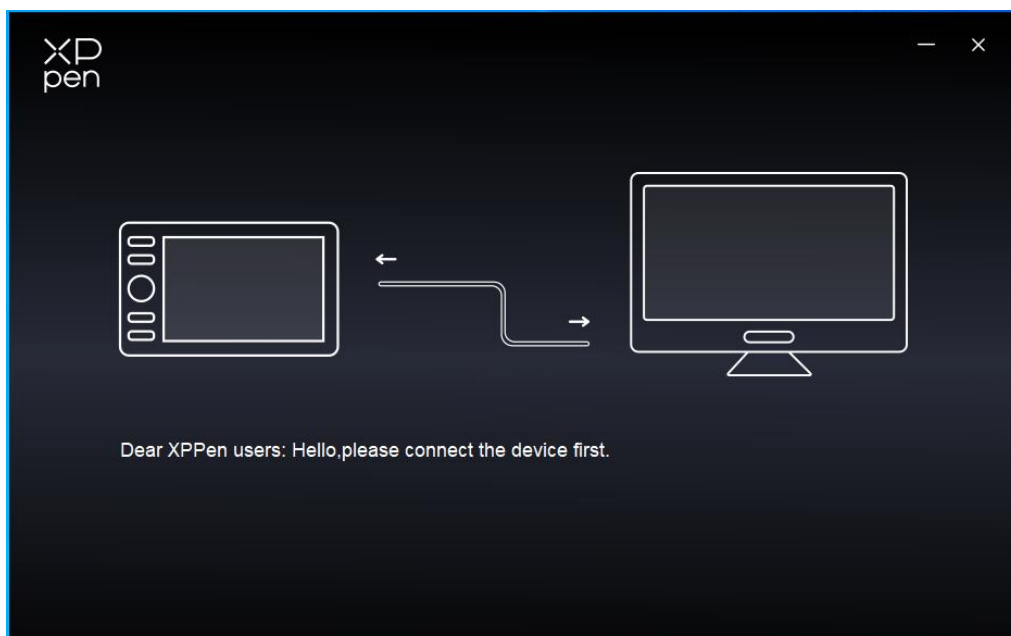
Rpm: Enter command “sudo rpm -i”. Drag the installation file to the window and execute the command;

Tag.gz: Unzip file. Enter command “sudo”. Drag “install.sh” to the window and execute command.

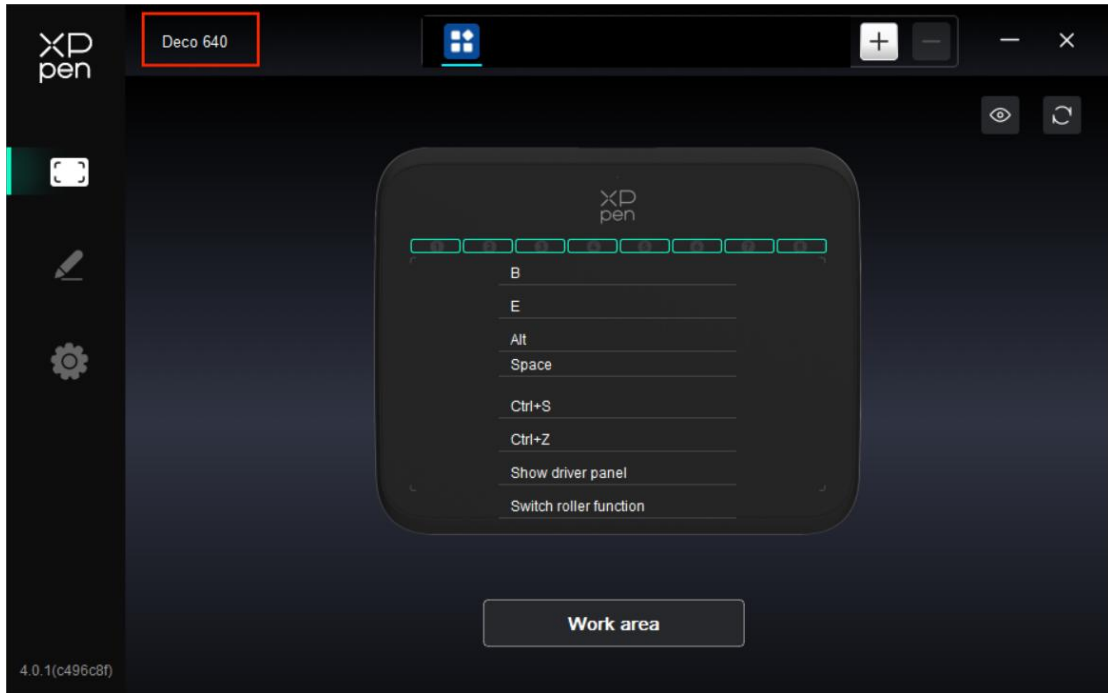
4.2 Introduction to Driver

The driver will run automatically after being installed. If it does not run automatically, please run it manually.

If the device is not connected or the connection fails, you can see the following prompt. In this case, try to restart your computer or the driver, or contact our service staff for support.



If the device is connected to your computer successfully, the device name will be displayed in the upper left corner of the driver.



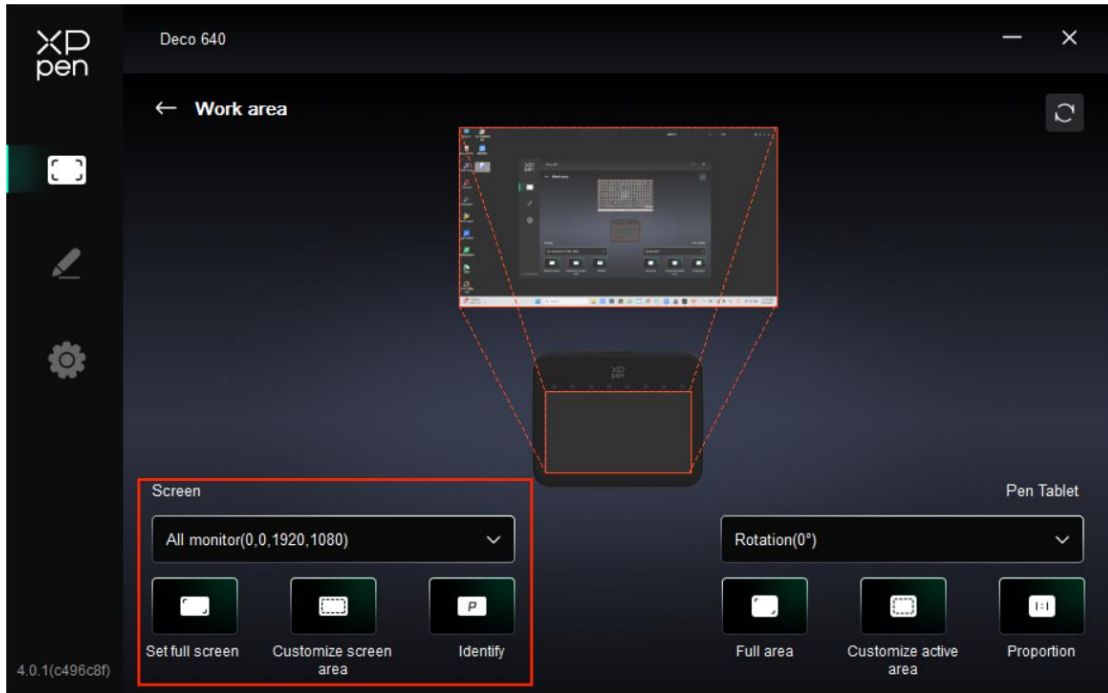
You can connect up to multiple devices via the driver at the same time. Customize a specific device's settings after switching to that device, and all changes made will only apply to that device.

4.2.1 Device Settings

Work Area

Go to Work Area and define the mapping between the device's work area and the screen display area.

Screen

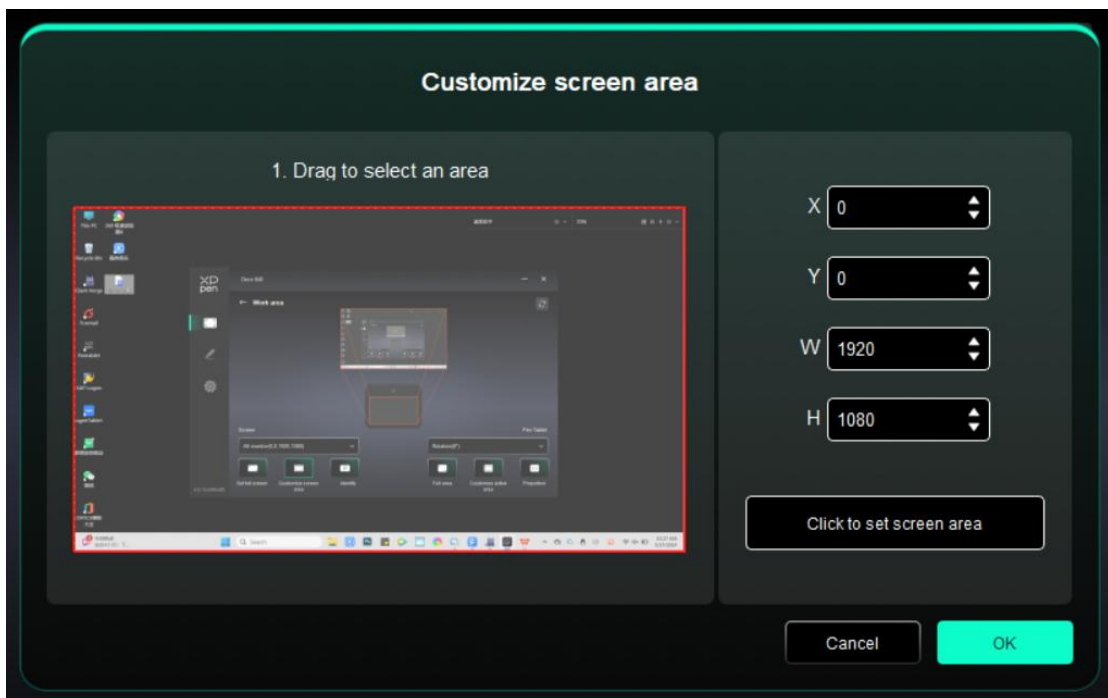


You can set the mapping between the display area of the current monitor and the device. If multiple monitors are used in duplicate mode, the work area of the device will be mapped to all monitors. When the pen moves in the work area, the cursor on all monitors will move at the same time.

If multiple monitors are used in extend mode, go to monitor tabs to select one of the monitors that the work area of the device will be mapped to.

There are two available options to set the monitor mapping area:

1. Set full screen: The whole area of the selected monitor;
2. Customize screen area: There are three ways to customize the work area.

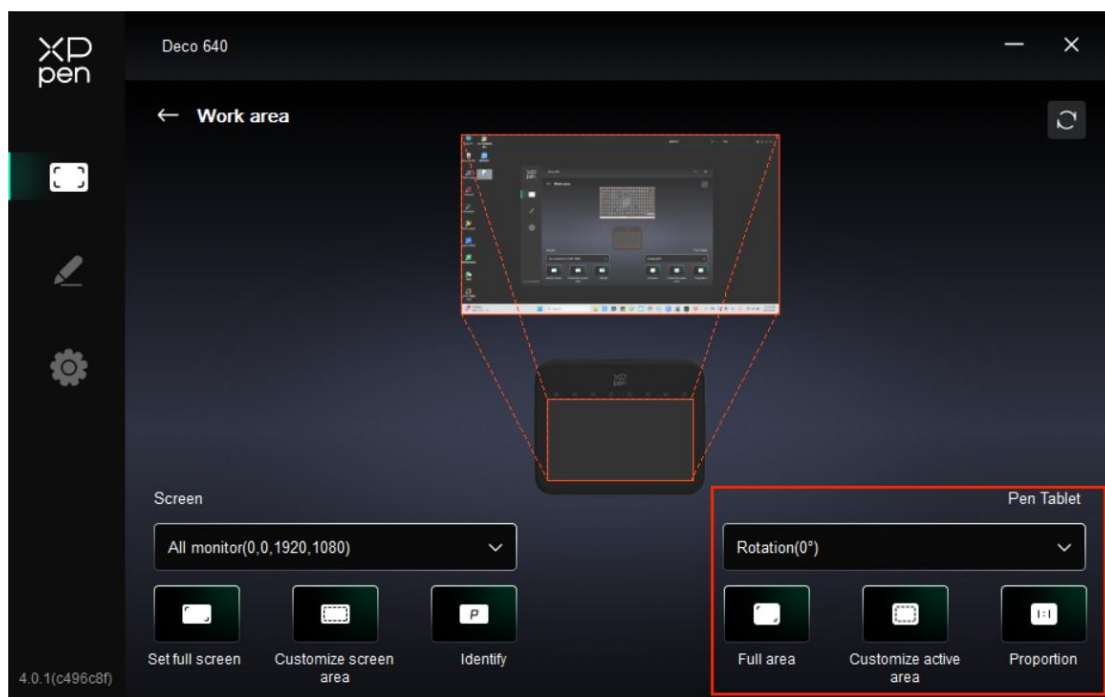


- Drag to select an area: Drag the cursor from one point to another on the Screen.
- Click to set screen area: Click the upper left corner position and lower right corner position to select on the monitor.
- Coordinates: Manually enter coordinates in the corresponding input boxes for X, Y, W and H.

Identify:

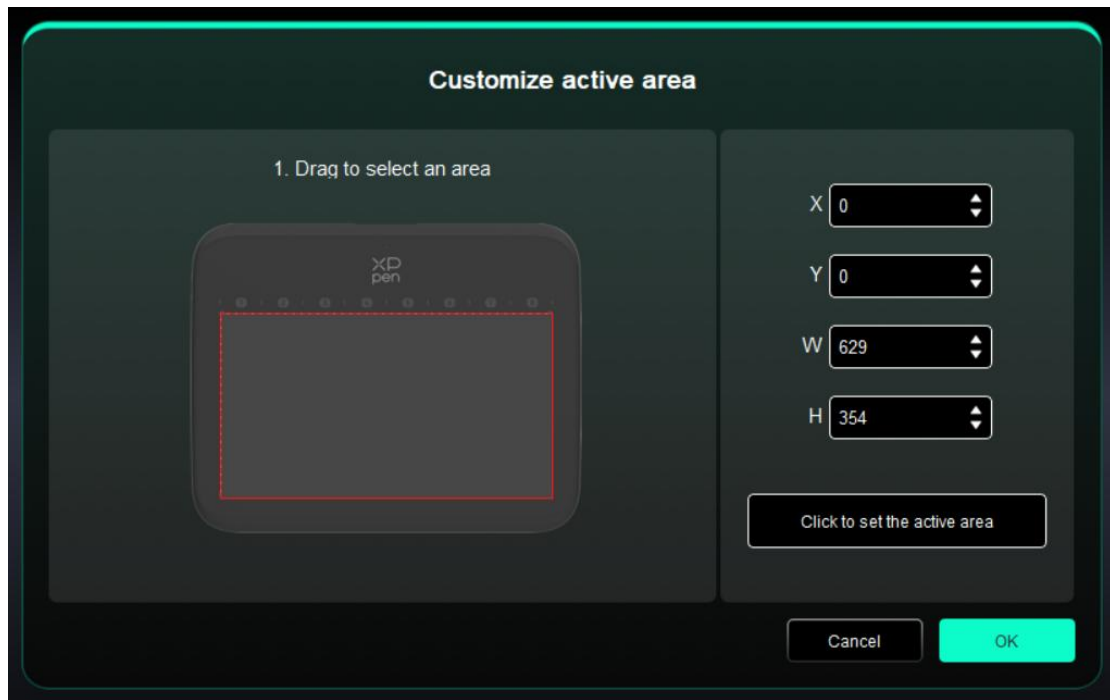
Identify all connected monitors. The numeric identifier will be displayed in the lower left corner of each monitor.

Pen Tablet



The driver enables the following ways to set the work area of the device:

1. Full area: The whole work area of the device is available.
2. Customize active area: Three ways.



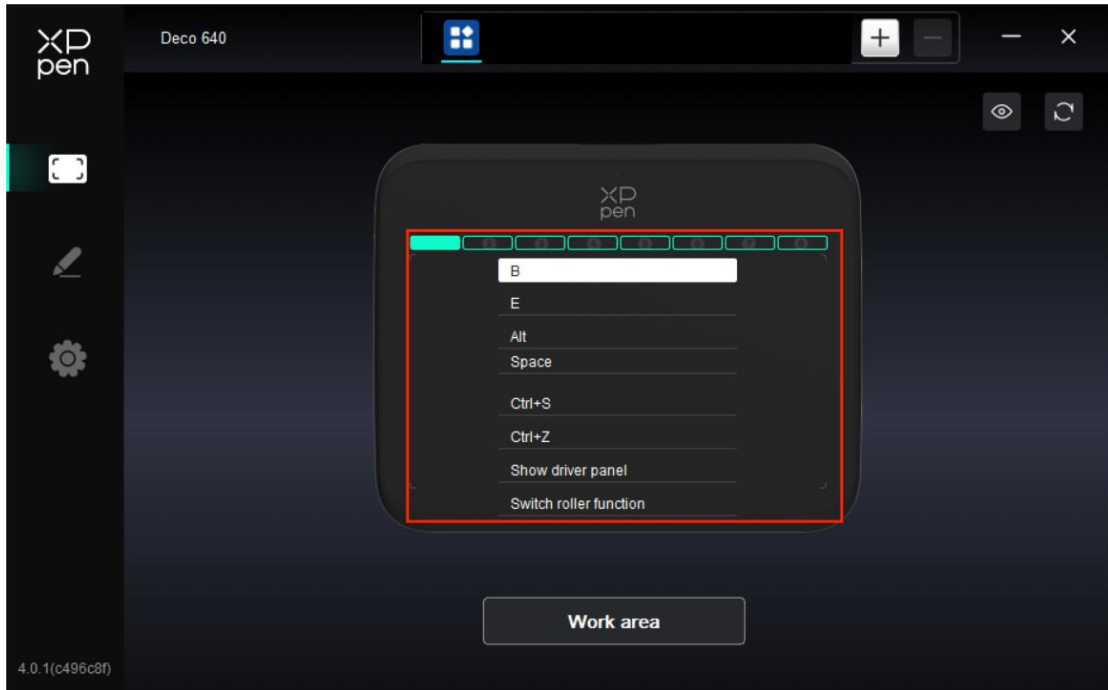
- Drag to select an area: Drag the cursor from one point to another on the device.
 - Click to set active area: Use stylus to click the upper left corner position and lower right corner position on your device.
 - Coordinates: Manually enter coordinates in the corresponding input boxes for X, Y, W and H.
3. Proportion: Scale your device's work area and selected display area proportionately. For example: After selecting proportion, if you draw a circle on the device, a circle will appear on the screen, but some part of the work area may not be used. But if you don't choose the proportion and draw a circle, then the circle may change into an ellipse on the screen.

Rotation:

You can set the device to 0°, 90°, 180° and 270° clockwise for use.

Left-handed mode: Rotate 180°.

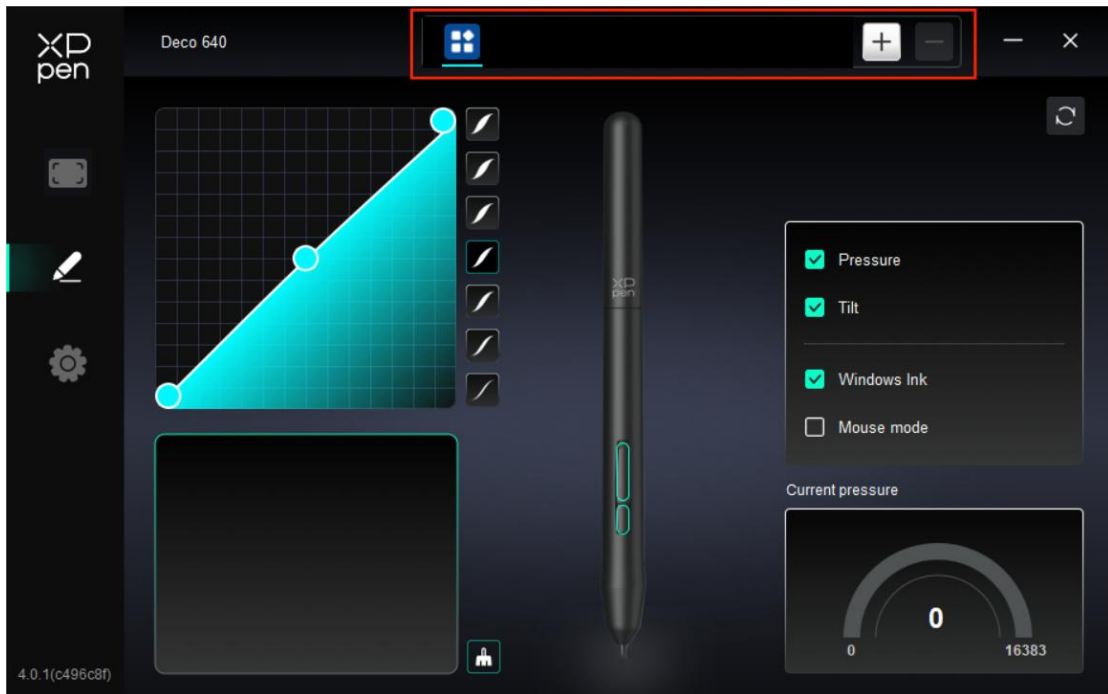
Shortcut Key



Click on the button position on the image (1-8) to customize its function.

Application

The driver allows you to set different functions for different applications.



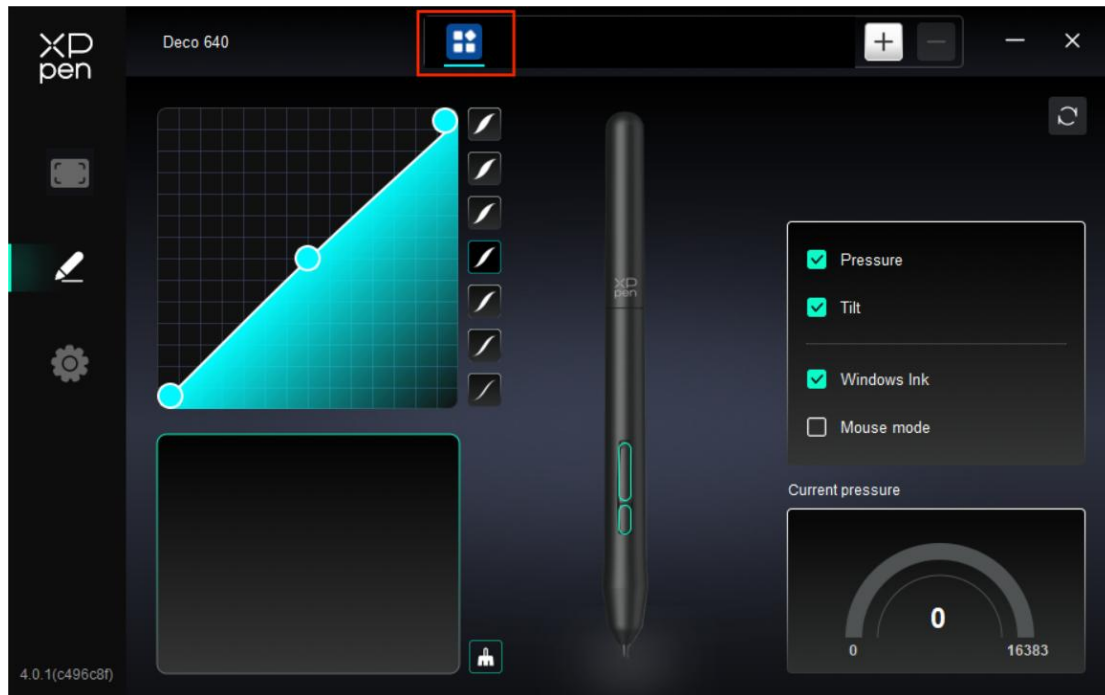
Add an application from the list of applications, tick the application, and then customize pen keys functions.

For example, if you select an application and change its configuration, the change is valid only when you use the application. When you switch to another application, the driver will

recognize it automatically. You can add up to 7 applications.

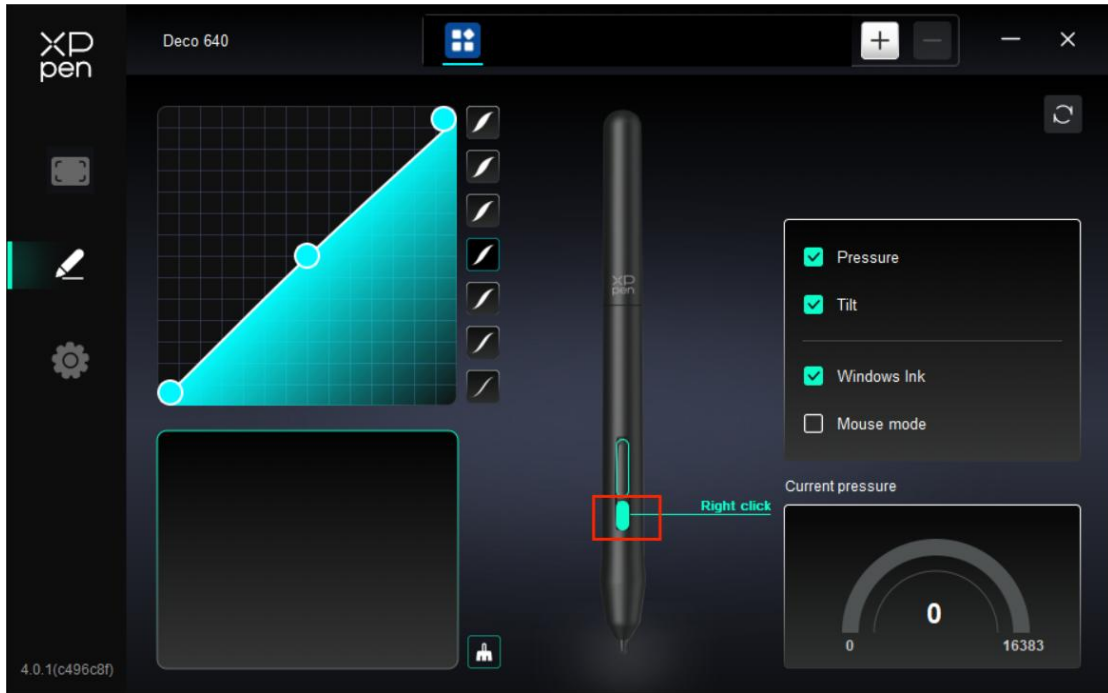
1. Click the + icon on the top right of the application bar to open the application list;
2. Select an application to be added from the running applications or click Browse to add from the installed applications;
3. Click "OK" to add the selected application;
4. Select an added application, and click the - icon on the top right of the application bar to delete the application.

If you select all other applications, it will apply to other uncustomized applications.

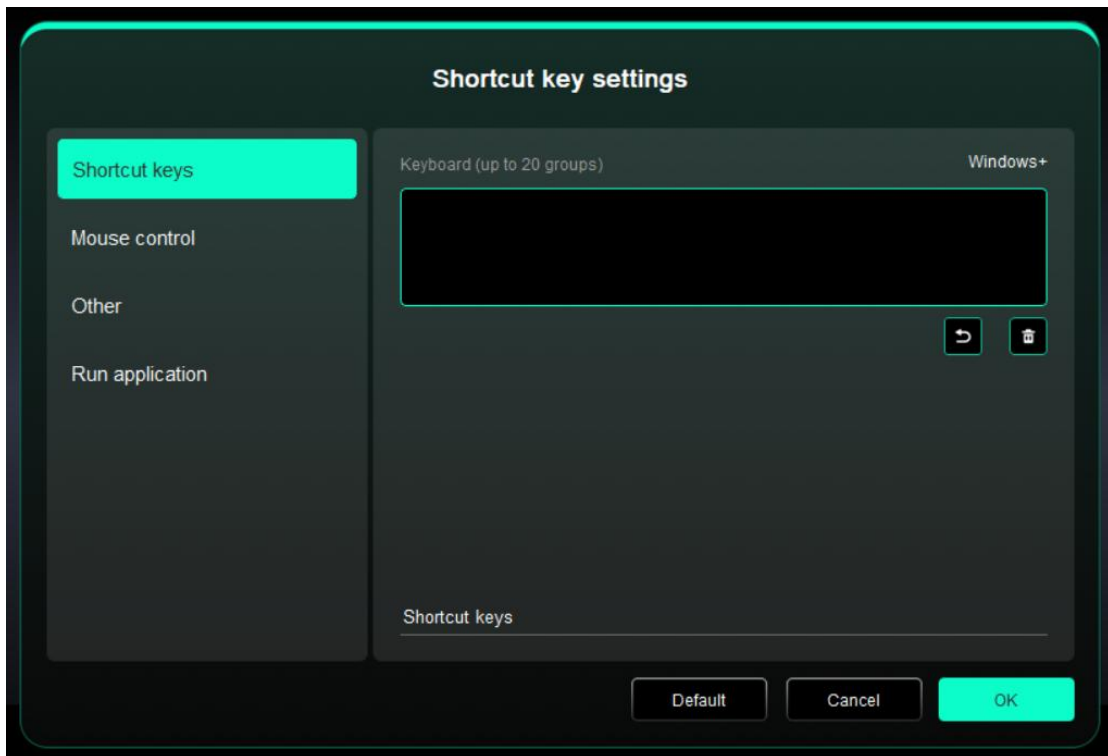


4.2.2 Pen Settings

When the stylus is within the work area, the device will recognize the stylus and add it to the driver. The stylus used should be compatible with the device.



Click on the pen button position on the image to customize its function.



Shortcut keys:

You can set keyboard shortcut, for example, set it as “Alt+A” in 3D MAX, so the alignment tool can be used.

Multiple groups of shortcut keys can be set. For example, type Ctrl+C, Ctrl+V, and when

you press the key, the shortcut key functions set will all run once.

Windows (Command): You can add a combination key containing system key, for example: to enter Win(Cmd)+Shift+3, you can press Shift+3 and the driver will bring the system key automatically.

Mouse Control:

Set the key combination of mouse and keyboard. With the "Shift" and "Left Click" selected, the shortcut actions can be enabled in application that supports such key combinations.

Other-Precision mode:

Limit the device's work area to a certain area. This function may allow you to create more detailed drawings.

Run Application:

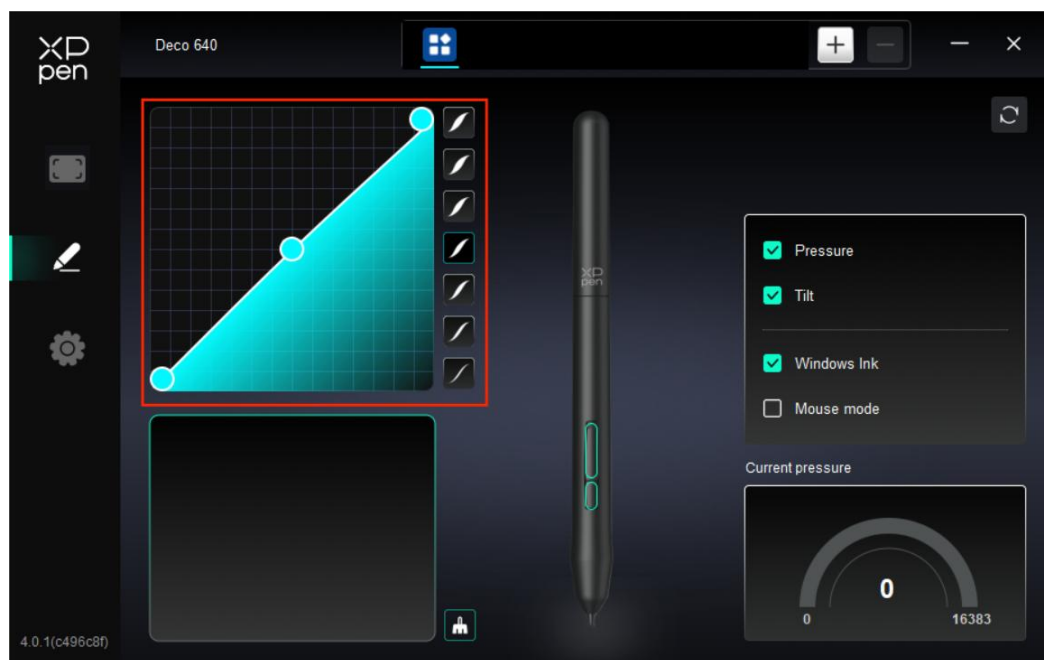
Run the selected application.

Customized name:

You can customize the name of the current settings.

Pressure settings:

By adjusting the "pen pressure" curve or selecting preset pressure options.



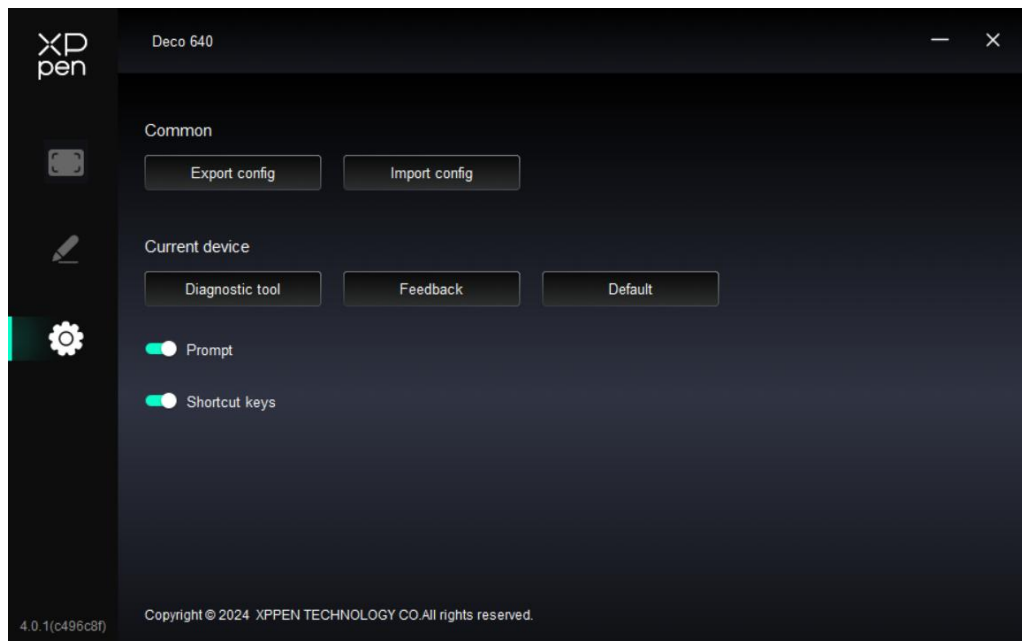
Mouse mode:

When you move your pen out of the work area, the cursor will stay where you leave, which is like operating a mouse. Select the mode and you can adjust the speed of the cursor on your device. If you do not select the mode, the pen mode applies by default.

Windows Ink (for Windows only):

Windows supports handwriting function. If you need to use this function in Microsoft Office/Whiteboard or other software, please do not turn it off.

4.3 Driver Settings



Shortcut keys:

If closed, disable the functions of all keys of the device.

Prompt:

If closed, when you press a key, no key prompt will be displayed at the bottom of the screen.

Diagnostic tool:

You can use the diagnostic tool in case of any problems while using the driver.

Feedback:

If you have any questions or suggestions during the use of the driver, you can give us feedback through this page.

Import & Export config:

You can import/export configurations to read or save their settings.

This function is available for only the same operating system.

4.4 Driver Uninstallation

Windows:

Go to Start -> Settings -> Apps -> Apps & Features, find "Pentablet" and then left click "Unload" as per prompts.

Mac:

Go to [Go]-> [Applications], find XPPen and then click "UninstallPenTablet" as per prompts.

Linux:

Deb: Enter command "sudo dpkg -r XPPenLinux" and execute the command;

Rpm: Enter command “sudo rpm -e XPPenLinux” and execute the command;

Tag.gz: Unzip file. Enter command “sudo”. Drag uninstall.sh to the window and execute command.

5.FAQs

1. Computer fails to recognize the device.
Check if your computer's USB port used works normally. If not, use another USB port.
2. Stylus does not work.
 - a) Make sure you are using the stylus that originally came with your device;
 - b) Make sure you installed the driver correctly, and check if the pen settings of the driver is normal.
3. The drawing software cannot sense the pen pressure while the cursor can move.
 - a) Check if the drawing software supports pen pressure;
 - b) Download the latest driver installation files from XPPen website, and check if the pen pressure is normal in the driver;
 - c) Before installing the driver, turn off your antivirus software and graphics software;
 - d) Uninstall drivers for other drawing displays before installation;
 - e) Restart your computer after the installation is completed;
 - f) If the pen pressure is normal in the driver (Windows: ensure Windows Ink is enabled in the pen settings of the driver), run the drawing software and test it again.
4. Line latency during drawing with the software.
Check if the computer configuration (CPU&GPU) meets the recommended configuration requirements for the drawing software installed, and optimize related functions via settings according to the FAQs posted on the official website of the drawing software.

If you need any further assistance, please contact us at:

Website: www.xp-pen.com

Email: service@xp-pen.com